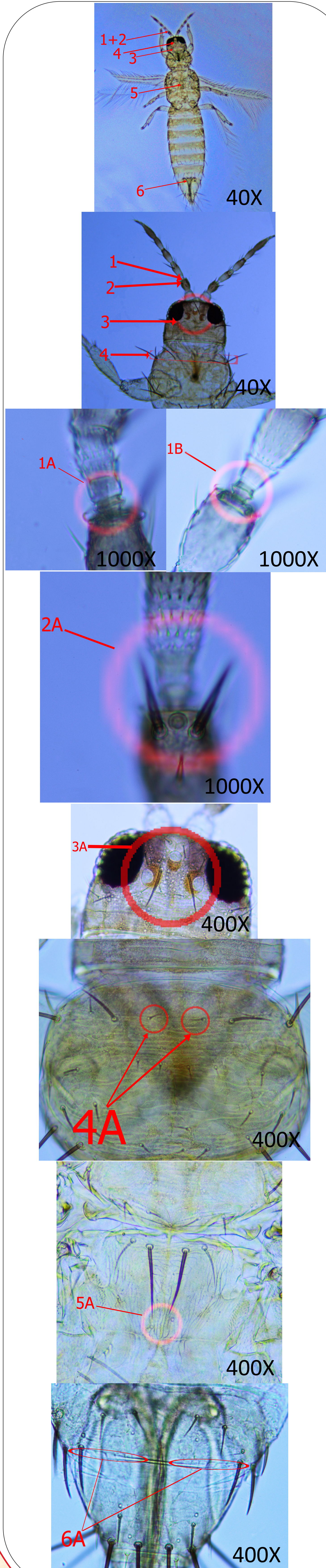


Thrips species in central Florida strawberry

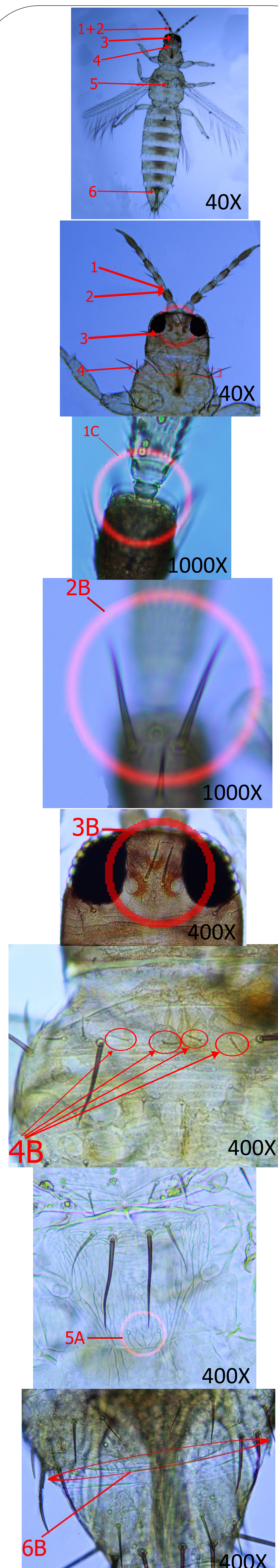
J.D. Cluever^{1,2}, H.A. Smith^{1,2}, J.L. Capinera², J.E. Funderburk^{2,3}, G. Frantz⁴, and J.C. Medley²
 1 Gulf Coast Research and Education Center, University of Florida, Wimauma, FL 33598
 2 Entomology and Nematology Department, University of Florida, Gainesville, FL 32611
 3 North Florida Research and Education Center, University of Florida, Quincy, FL 32351
 4 Glades Crop Care, Jupiter, FL 33458
 Photo Credit: J.D. Cluever Diagram credit: J.C. Medley

Major Species

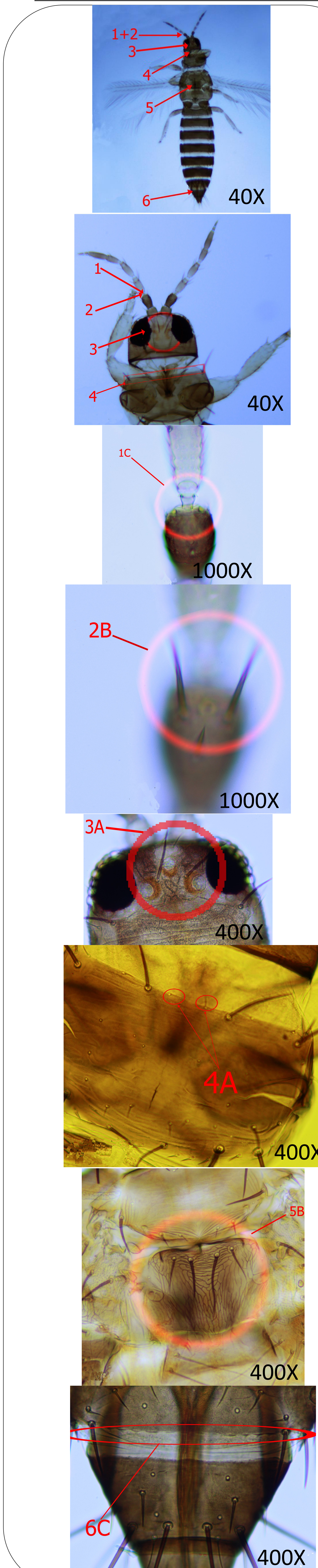
Frankliniella bispinosa
Florida flower thrips



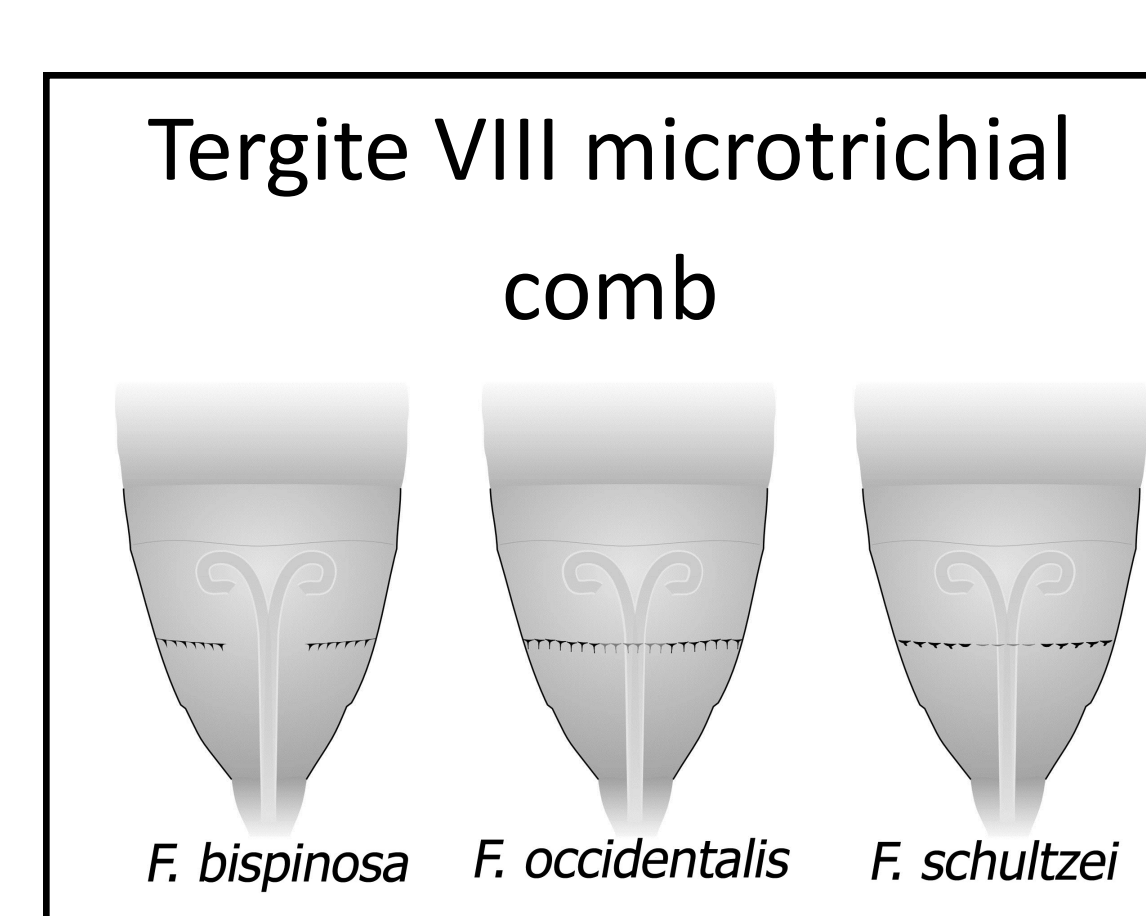
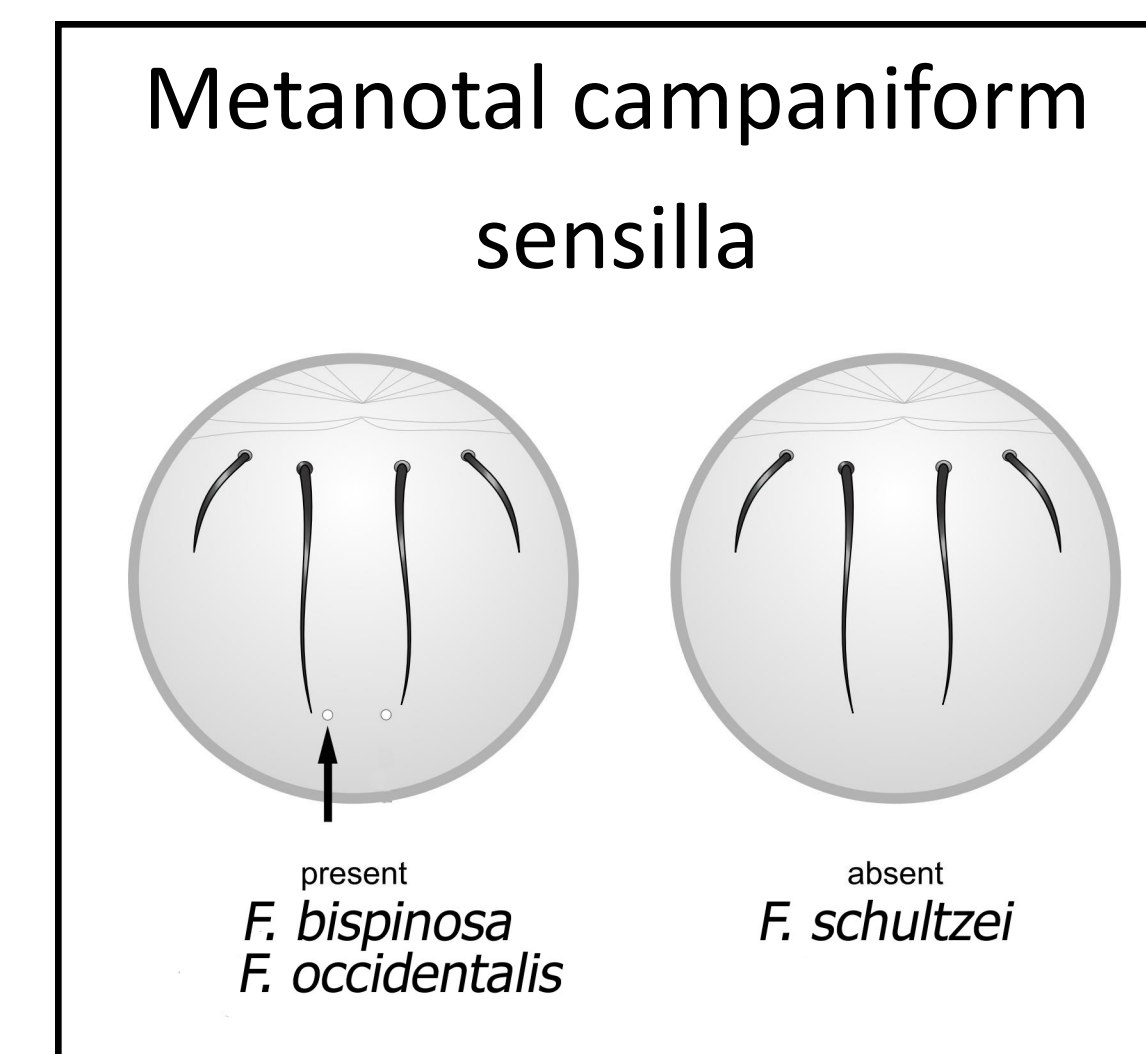
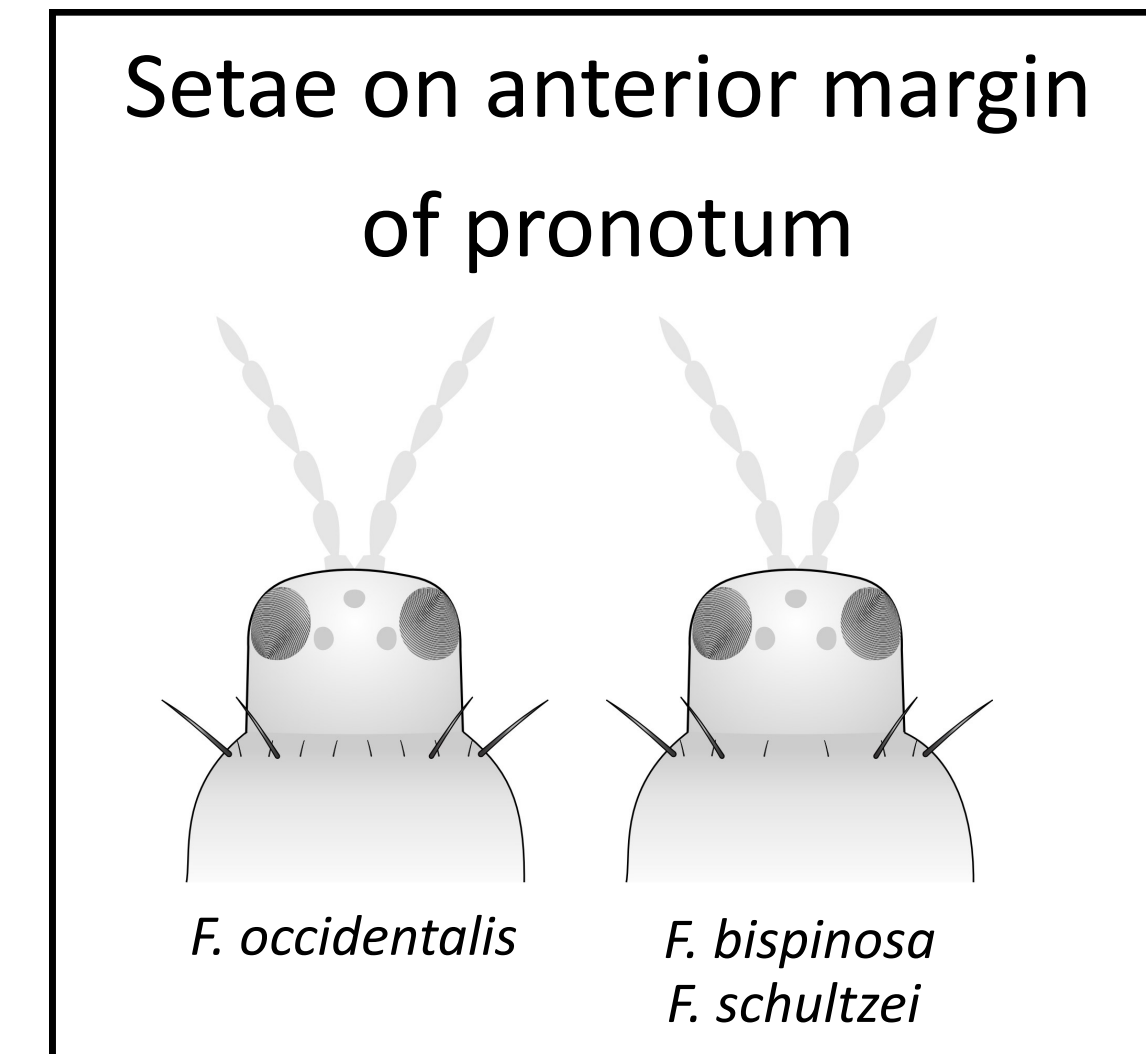
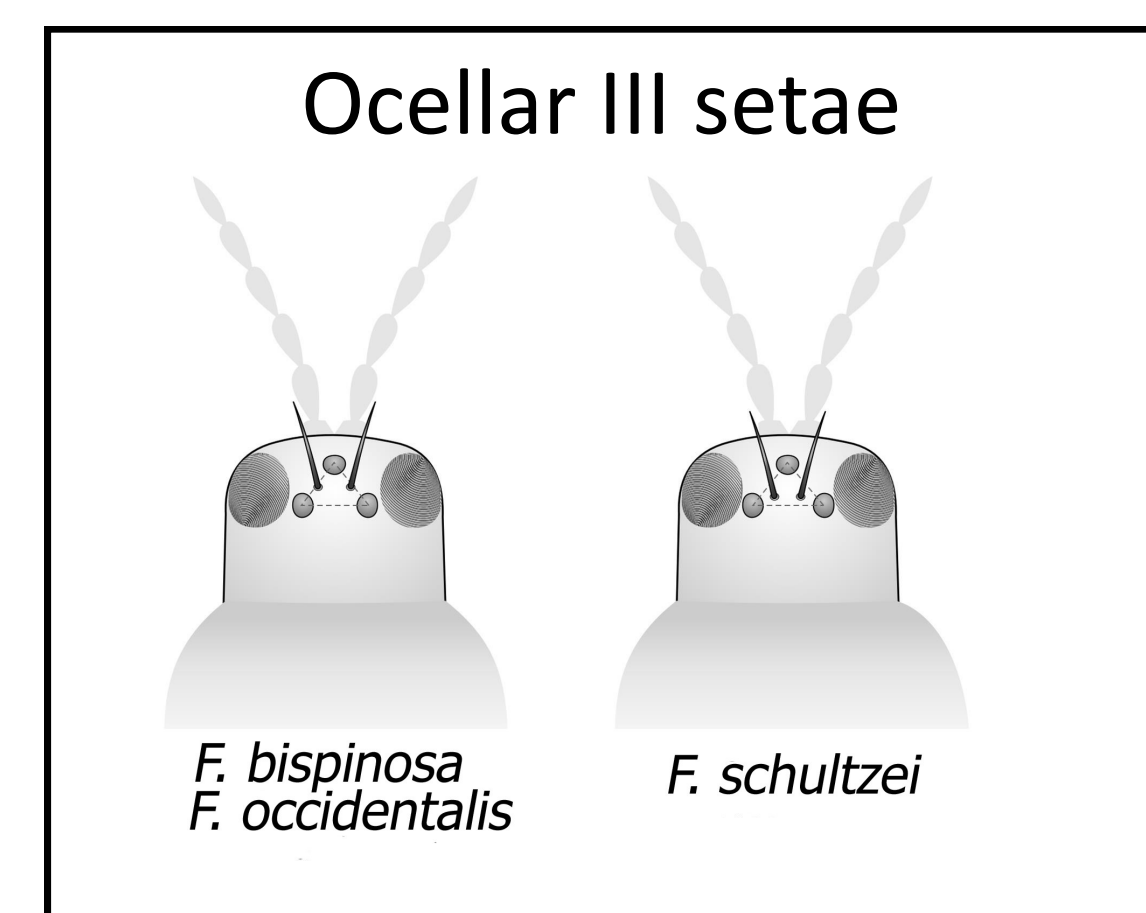
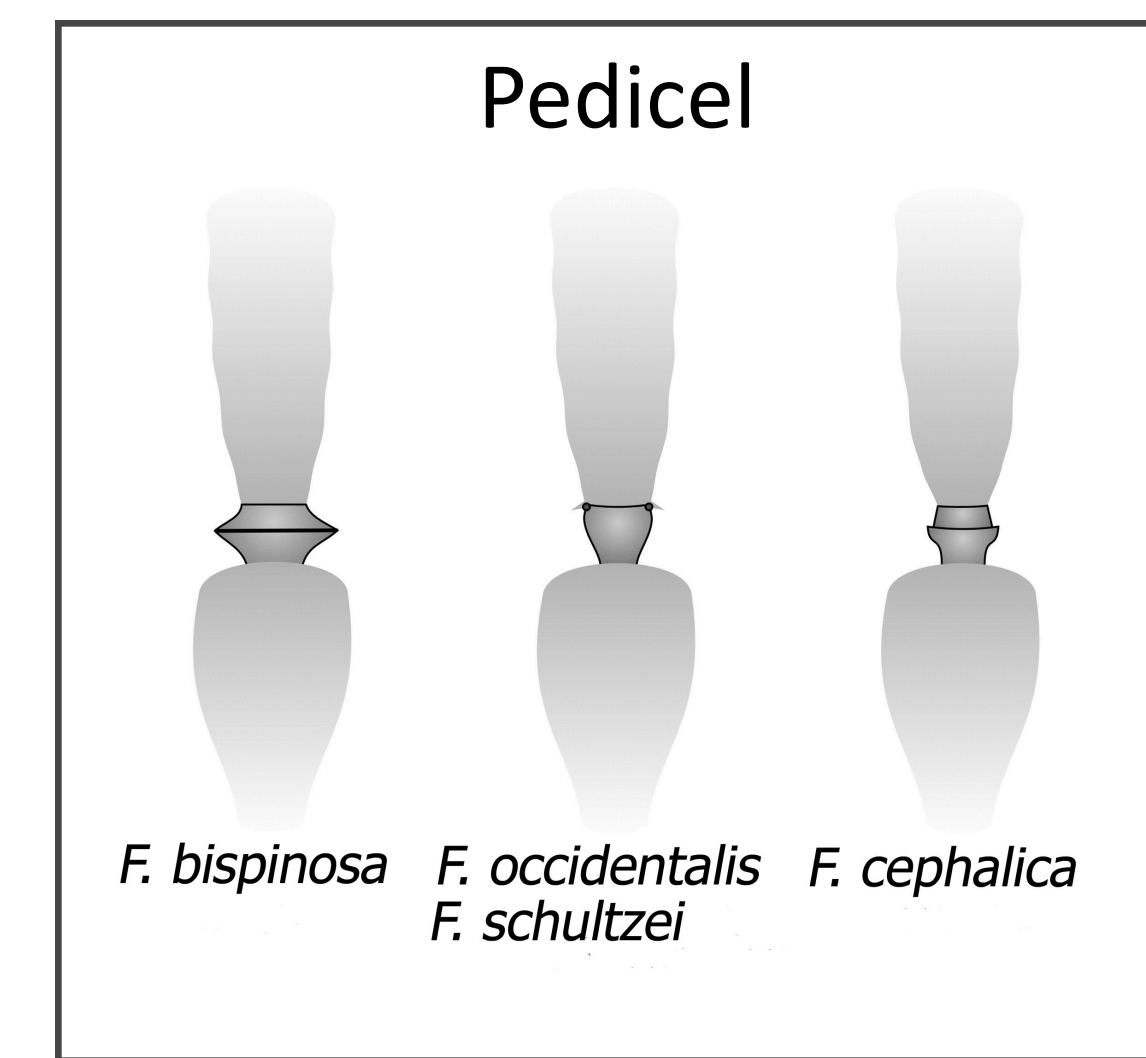
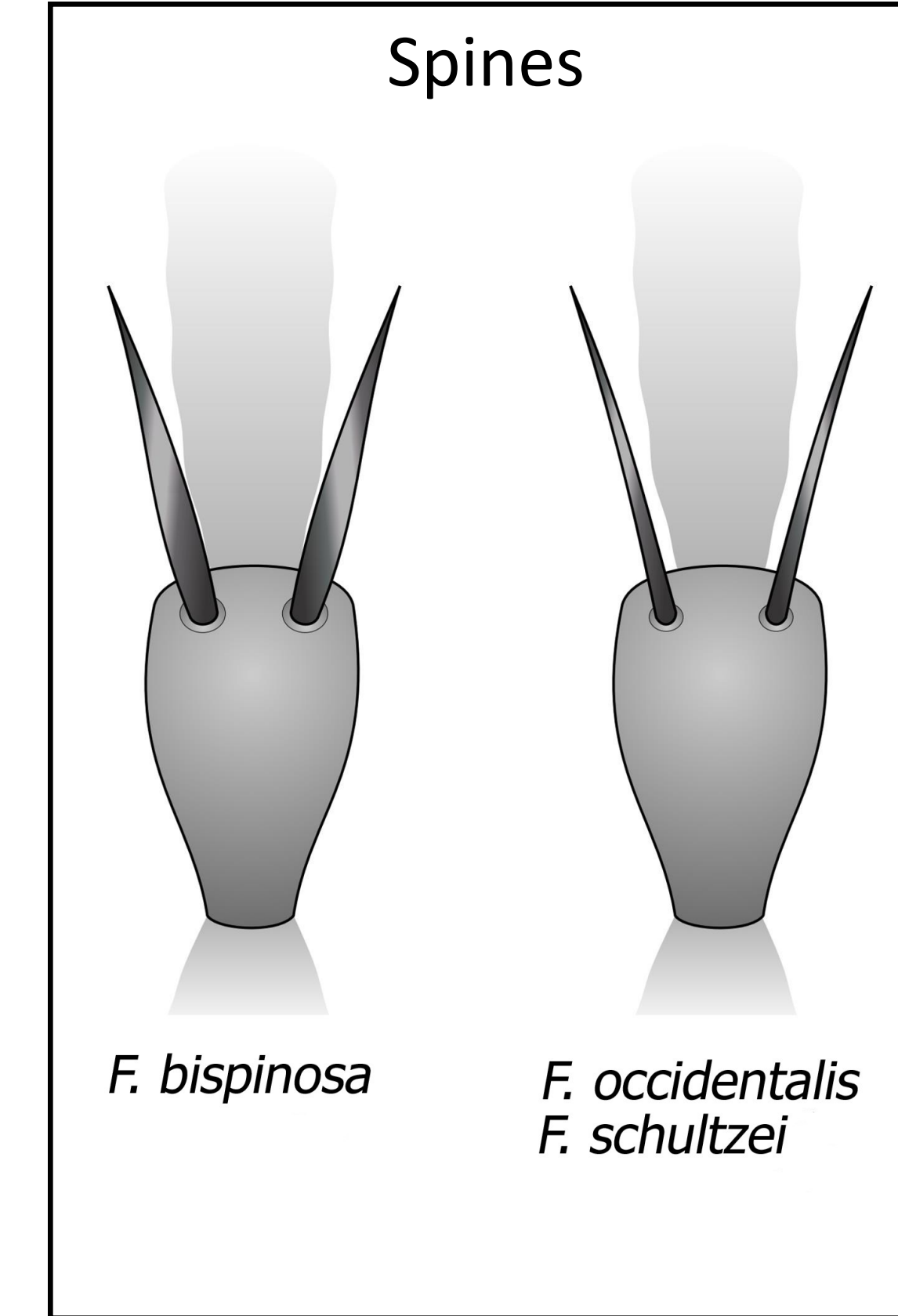
Frankliniella occidentalis
western flower thrips



Frankliniella schultzei
common blossom thrips



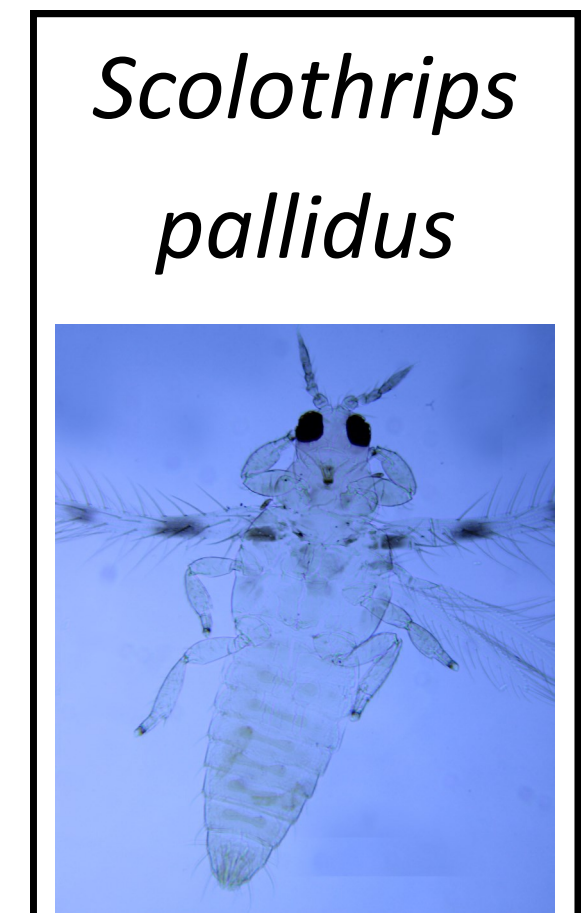
Characteristics



Key

1. Third antennal segment pedicel flange-shaped (1A and 1B); Setae arising from second antennal segment forming thick, heavy spines (2A); Two minor setae on anterior margin of pronotum between inner two major setae (4A); Tergite VIII microtrichial comb well-developed and interrupted in center (6A).....*Frankliniella bispinosa*
- 1'. Third antennal segment pedicel smooth (1C); Setae arising from second antennal segment not forming thick, heavy spines (2B); Two or four minor setae on anterior margin of pronotum between inner two major setae (4A and 4B); Tergite VIII microtrichial comb well-developed and uninterrupted or not well-developed (6B and 6C)..... Go to 2
2. Ocellar III setae arising far apart (3A); Metanotal campaniform sensilla usually present (5A); Four minor setae on anterior margin of pronotum between inner two major setae (4B); Tergite VIII microtrichial comb well-developed (6B)..... *Frankliniella occidentalis*
- 2'. Ocellar III setae arising close together (3B); Metanotal campaniform sensilla absent (5B); Two minor setae on anterior margin of pronotum between inner two major setae (4A); Tergite VIII microtrichial comb not well-developed (6C)..... *Frankliniella schultzei*

Minor Species



*1A and 1B is the only morphological difference between *F. bispinosa* and *F. cephalica*

References

Hoddle, M.S., L.A. Mound, and D.L. Pairs. 2012. Thrips of California. CBI Publishing, Queensland, Australia.