

CUTWORM & CRICKET BAIT

FOR VEGETABLES, FLOWERS, FRUITS, ORNAMENTAL PLANTS, LAWNS, PASTURES, AND HAY FOR THE CONTROL OF CUTWORMS, ARMYWORMS, FIELD CRICKETS, DARKLING BEETLES, GRASSHOPPERS, SOWBUGS AND ANTS. ALSO FOR THE CONTROL OF MOLE CRICKETS. CONTAINS SEVIN[®] BRAND CARBARYL INSECTICIDE

ACTIVE INGREDIENT:

Carbaryl: 1-Naphthyl N-methylcarbamate)5.0%
INERT INGREDIENTS:.....95.0%
TOTAL100.0%

Sevin[®] is a registered trademark of Rhone-Poulenc for its brand of carbaryl insecticide.

KEEP OUT OF REACH OF CHILDREN AND DOMESTIC ANIMALS

CAUTION

STATEMENTS OF PRACTICAL TREATMENTS

N-METHYLCARBAMATE

IF SWALLOWED: Call a physician or Poison Control Center immediately. Induce vomiting by giving victim 1 or 2 glasses of water and touching back of throat with finger. Do not induce vomiting or give anything by mouth to an unconscious or convulsing person. **IF IN EYES:** Flush eyes with plenty of water. Get medical attention. **IF ON SKIN:** Remove contaminated clothing. Wash affected area with soap and water. **NOTE TO PHYSICIAN:** Carbaryl is a moderate, reversible, cholinesterase inhibitor Atropine is antidotal. Do not use 2-PAM, opiates, or cholinesterase inhibiting drugs.

PRECAUTIONARY STATEMENTS

HAZARD TO HUMANS AND DOMESTIC ANIMALS

CAUTION: HARMFUL IF INHALED OR SWALLOWED. Avoid breathing of dust. Do not take internally. Avoid contact with skin or eyes. Wear regular long-sleeved work clothing. Change to clean clothing daily. Wash hands and face before eating. Wash thoroughly after handling. AVOID CONTAMINATION OF FOOD, FEED, WATER SUPPLIES, STREAMS, AND PONDS DURING APPLICATION OR WHEN CLEANING EQUIPMENT.

PERSONAL PROTECTIVE EQUIPMENT (PPE)

Applicators and other handlers must wear long-sleeved shirt and long pants and shoes plus socks. Follow manufacturers' instructions for cleaning/maintaining PPE. If no such instructions for washables, use detergent and hot water. Keep and wash PPE separately from other laundry.

USER SAFETY RECOMMENDATIONS

Users should wash hands before eating, drinking, chewing gum, using tobacco or using the toilet.

ENVIRONMENTAL HAZARDS

This product is extremely toxic to aquatic and estuarine invertebrates. For terrestrial uses, do not apply directly to water, or to areas where surface water is present or to intertidal areas below the mean high water mark. Do not contaminate water by cleaning of equipment or disposal of wastes. Apply this product only as specified on this label.

STORAGE AND DISPOSAL

Do not contaminate water, food, or feed by storage or disposal.

PESTICIDE STORAGE: Pesticide should be stored in the original container in a locked storage area. **PESTICIDE DISPOSAL: (HOUSEHOLD ONLY)** Securely wrap original container in several layers of newspaper and discard in trash. **CONTAINER DISPOSAL: (HOUSEHOLD ONLY)** Do not reuse empty bag. Discard bag in trash. **PESTICIDE DISPOSAL: (EXCEPT HOUSEHOLD)** Wastes resulting from the use of this product may be disposed of on site or at an approved waste facility. **CONTAINER DISPOSAL: (EXCEPT HOUSEHOLD)** Completely empty bag into application equipment. Then dispose of empty bag in a sanitary landfill or by incineration, or if allowed by State and local authorities, by burning. If burned, stay out of smoke.

EPA EST. NO. 829-FL-1 (3), 829-NC-1 (4); 829-NC-2 (5) Number following Est. No. corresponds to first digit in Lot No.

Southern Agricultural Insecticides, Inc.

Palmetto, FL 34220 Hendersonville, NC 28793 Boone, NC 28607

EPA Reg. No. 829-285

DIRECTIONS FOR USE

It is a violation of Federal Law to use this product in a manner inconsistent with its labeling. Do not apply this product in a way that will contact workers or other persons, either directly or through drift. Only protected handlers may be in the area during application. For any requirements specific to your State or Tribe, consult the agency responsible for pesticide regulation.

AGRICULTURAL USE REQUIREMENTS

Use this product only in accordance with its labeling and with the Worker Protection Standard, 40 CFR part 170. This Standard contains requirements for the protection of agricultural workers on farms, forests, nurseries, and greenhouses, and handlers of agricultural pesticides. It contains requirements for training, decontamination, notification, and emergency assistance. It also contains specific instructions and exceptions pertaining to the statements on this label about personal protective equipment (PPE), and restricted-entry interval. The requirements in this box only apply to uses of this product that are covered by the Worker Protection Standard. Do not enter or allow worker entry into treated areas during the restricted entry interval (REI) of 12 hours. PPE required for early entry to treated areas that is permitted under the Worker Protection Standard and involves contact with anything that has been treated, such as plants, soil, or water, is: coveralls, Waterproof gloves, Shoes plus Socks.

NON-AGRICULTURAL USE REQUIREMENTS

The requirements in this box apply to uses of this product that are NOT within the scope of the Worker Protection Standard for agricultural pesticides (40 CFR Part 170). The WPS applies when this product is used to produce agricultural plants on farms, forests, nurseries, or greenhouses. Keep children and pets off treated areas until subsequent rainfall or irrigation has washed the bait into the soil and the area is dried.

Apply granules as a broadcast application over the soil with ground equipment. Treatments may be repeated as necessary. Dosages from 1/2 lb. to 1 lb. per 1,000 sq. ft. will control Ants, Cutworms, Armyworms, Crickets, Darkling Beetles, Grasshoppers and Sowbugs. "Subsequent planting of food and feed crops in treated soil must be made with crops on this or other carbaryl labels."

| Dosage Rate CROP | Days Between Final 1,000 Sq. Ft. | Application & Harvest |
|--|-------------------------------------|---|
| Cucumbers, Squash, Melons, Peanuts | 1/2 lb. | None |
| *Alfalfa, *Peas, & **Cotton | 3/4 lb. | *3 Days **7 Days |
| Beans, Carrots, Corn, Eggplant, Okra, Peppers, Potatoes, Sweet Corn, Tomatoes | 1 lb. | None |
| Asparagus, Strawberries | 1 lb. | 1 Day |
| Broccoli, Brussels Sprouts, Cabbage, Cauliflower, Head Lettuce, Garden Beets (roots), Horseradish, Parsnips, Rutabagas, Radishes and Turnips (roots) | 1 lb. | 3 Days |
| Sugar Beets, Collards, Endive, Garden Beets (tops), Kale, Leaf Lettuce, Parsley, Spinach, Swiss Chard, Turnips (tops), | 1 lb. | 14 Days |
| Tobacco | 1/2 - 1 lb. | None |
| Fruits - Apples(1), Apricots(3), Cherries(1), Citrus(5), Grapes, Nectarines(3), Peaches(1), Pears(1), Plums(1). | 1 lb. | the number in () after fruit name is the preharvest interfal |
| Ornamentals - Annual plants, herbaceous plants and shrubs, trees, woody plants | 1 lb. | |

LAWN, TURF AND ORNAMENTAL PLANTS

Treatments may be repeated as necessary to control Cutworms, Armyworms, Field Crickets, Mole Crickets, Darkling Beetles, Grasshoppers and Sowbugs.

LAWNS AND TURF - Treat entire area evenly at a dosage of 3/4 to 1 lb. per 1000 sq. ft. Apply with a rotary spreader to obtain uniform coverage, giving particular attention to edges of sidewalks and along porch and patio foundations. For best results cut lawn, remove clippings and water thoroughly before treatment.

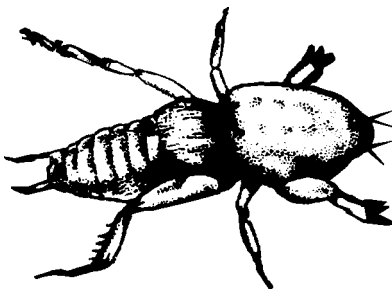
ORNAMENTAL PLANTINGS - Apply evenly to soil around plants, shrubs and trees at the rate of 3/4 to 1 lb./1000 sq. ft. For best results, areas to be treated should be damp.

GRASS, HAY, AND PASTURES - For the control of Ants, Cutworms, Armyworms, Mole Crickets, Darkling Beetles, Grasshoppers, and Sowbugs apply 1 lb. per 1,000 sq. ft. (40 lbs. per acre). For best results, areas to be treated should be damp. Repeat treatment as necessary.

IMPORTANT PRE-HARVEST AND GRAZING USE INFORMATION

Tolerances established under the Federal Food, Drug, and Cosmetic Act permit the sale of crops bearing probable Sevin residues when SEVIN is used in accordance with label directions. If SEVIN insecticide is used in accordance with label directions, these crops including bean vines, carrot tops, pea vines, sugar beet tops, corn forage, and cotton forage may be grazed or harvested for use as feed for dairy and meat animals without resulting in residues in milk, or meat in excess of established tolerances.

NOTICE: Buyer assumes all risk and liability of use, storage and/or handling of this material not in accordance with the terms of this label.



Southern Agricultural Insecticides, Inc.

Palmetto, FL 34220

Hendersonville, NC 28793

Boone, NC 28607

revised 1998