



*Nearly all men can stand adversity, but if you want to test a man's character, give him power.* Abraham Lincoln

**Calendar Highlights:**

Nov. 10...Veteran's Day (observed)  
23-24..Thanksgiving Holiday

3...USF Garden Club tour  
10:00 - 12:00

8...Entomology Faculty  
Meeting - Polycom in  
Auditorium; 10:30--11:45am

13...UNIFAS Advisory Comm.  
Meeting-Polycom 1-3:00pm

14...FASP meeting - Polycom  
8:30am - 12:30pm

16...Faculty Senate Meeting -  
Polycom in Auditorium;  
3:00 - 5:00 pm

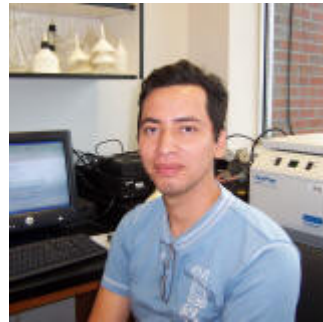
Pathology Dept. Interviews  
via Polycom:

1...John Rupe; 3:00 - 4:15 pm  
3...Frank White; 2:15- 3:30 pm  
21..Jeffrey Jones;  
1:30 pm - 2:45

**Welcome New Gators...**

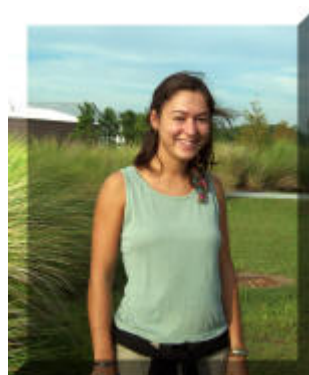
We welcome three new international scholars to our team this past month:

**Humberto Moratinos** will be assisting in Bielinski Santos's research program for a few months. He comes



**Tomas Hasing** is a tomatoe producer in Riobamba, Ecuador. He is working in Natalia Peres's pathology program for the next six months. Working with Craig Chandler in his strawberry breeding program is **Jozer Mangandi**. Jozer comes from El Salvador, where he is a student of Agronomic Engineering at the Pan-American School of Agriculture in Honduras.

In September, Amy Shober was able to fill her Biological Scientist position in



Landscape Nutrient/Runoff research. **Gitta Shurberg** made the move from Pennsylvania to accept the position. She came to us highly recommended by Dr. Shober who had worked previously with her at the University of Delaware. Gitta graduated with a BS degree from the University of Delaware in 2005. While her studies were in another field, she also pursued opportunities as an undergraduate in scientific areas such as plant pathology, entomology, and biology. After graduating, she took a lab assistant position in the department of Plant and Soil Sciences at the

University of Delaware. Her vast and varied experience and her very congenial working attitude made her a good choice for this new Biological Scientist position.



to us from Venezuela where he is an Agronomy Professor at the Universidad Central De Venezuela in Maracay, Venezuela. producer of greenhouse



### **NOVEMBER Birthdays:**

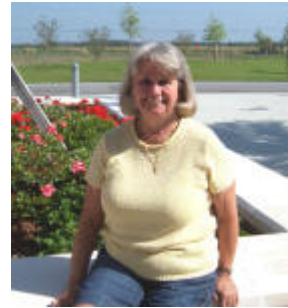
- 4.....Craig Chandler
- 7.....Ashley Stephens
- 7.....Mark Dykes
- 18....Mary Thornhill
- 19....James "Shine" Taylor
- 27....Jozer Mangandi
- 29....Martin Wortman
- 30....Don McIntyre



In May of this year we were saddened to hear that **Dianne Griesman** was leaving us. We're very happy to announce she's back (at least for a while). Dianne is assisting Cora Sanders in the fiscal office, as well as training a new OPS, **Elena Santa**



**Maria** for the fiscal office. Elena received her BS in Business Administration from the Philippine Women's University in the Philippines. She also received her CPA certification in the Philippines. Elen has worked for Sanwa Growers, Inc. in Tampa for the past ten years and lives in Apollo Beach. Welcome aboard, Elen!



Welcome back to **Carol Campbell**, OPS for David Schuster's Entomology Dept. Carol got a 3-month break before being called back to assist in the entomology program.



**CONGRATULATIONS...**Dr. Elzie McCord Jr., Courtesy Faculty for the Gulf Coast REC and Asst. Professor of biology at New College, is the recipient of the community service award for 2006 given by the Sarasota Branch NAACP. Elzie co-chaired the National Marrow Donor Program Advisory Committee and teaches nutrition to middle and high school students in the PUSH (Preparing Unique Students for Healthcare Careers)/SUCCESS summer program at New College in addition to his regular teaching appointment. As a prostate cancer survivor, he often speaks to community groups about the disease. As you may guess, Elzie stays quite busy but never too busy to miss an

opportunity to help others.

### **Congratulations to our Emeritus faculty!**

Our emeritus faculty are still out there making news! The Cucurbitaceae 2006 conference held in Ashville, NC this past September awarded three Lifetime Achievement Awards: Don Maynard (GCREC) for Crop Production, Harry Paris (Israel) for Crop Breeding and Michel Pirat (France) for Phytopathology.



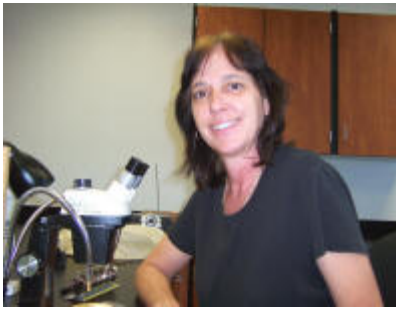
Our congratulations, also, to Alex Cszinszky for his recent "Golden Diploma" award from his alma mater, the University of Hort Science in Budapest where Alex received his BS degree. He went on to Washington State to complete his MS and then PhD. This award is a lifetime achievement award for 50 years of sustained excellence and contributions to the field of his study. Another ten years, Alex, and you can receive the "Diamond Award" or 20 more for the "Ruby Award"! Congratulations on your achievement!



### **WELCOME...**



Joining us October 26th as part of an industry internship is **Jean-Christophe Lepeltier** who works for *Clause Tezier*. Jean-Christophe began his internship program in US laboratories with the University of



New to our Ornamental Entomology program is **Deborah Farr**, who will be assisting Jim Price and Curtis Nagle as an OPS employee. Deborah graduated from East Texas State University (now Texas A&M at Commerce) with a BS degree in biology. She has been "employed" for some time as full-time Mom, and has just begun substitute teaching this fall in addition to assisting with our entomology research. Welcome aboard, Deborah!

North Carolina and has transferred here until February to work with Jay Scott's tomato breeding program. He will be assisting with research on resistance to TYLCV and doing field disease severity ratings.



Another new face around the Center is **Marcia Barquero Quiros**. Marcia has been working temporarily with Steve MacKenzie in the Pathology Dept. these past few weeks to receive training in techniques required for Natalia Peres's joint T-Star grant.

Last month Craig Chandler's strawberry genetics research program welcomed visiting scientist **Adam Dale**, Professor of Horticulture at the University of Guelph in Ontario, Canada. Adam was born and raised in England and has been involved with strawberry and raspberry research for over 20 years. He has released 11 strawberry cultivars. Adam will be working with Craig for the 2006-2007 berry season in development of day neutral cultivars for high early season yields in west central Florida.



### **TEAMS employees: Plan now for December leave cash out...**

TEAMS employees are eligible to cash out up to 16 hours of vacation leave — regardless of FTE — during the pay period of November 17 to November 30, provided 40 hours of vacation leave remain on balance after the end of that pay period. If you are eligible, you will receive the cash-out payment in your December 8 paycheck.

To participate, report the number of hours you wish to cash out by entering them in the Weekly Elapsed screen in the myUFL systems. You may report the hours *on any day during the pay period of November 17 through November 30* using the "DLC – 280 December Vacation Leave" time reporting code. Hours should be reported *on a day when you are not scheduled to work* to prevent the myUFL systems from blocking you by using the "exceeds 24 hours" exception. Employees should enter the time reporting code in Weekly Elapsed screen by November 29. Please verify with your department if an earlier deadline has been established internally. Please note:

- The pay period specified is the only pay period the DLC time reporting code can be used.
- It is the department's responsibility to ensure that no more than 16 hours of vacation leave are cashed out and that 40 hours of vacation leave remain on balance after the end of the November 17-30 pay period.

If you have any questions, or need help please see Patty.

### **Emergency Contact available through FL Drivers License:**

Ever worry about how soon your family would be contacted in case of an accident? You can now go online and enter two emergency contacts on your Florida Drivers License which can only be retrieved by a police officer. If you are in an accident, the police can run the drivers license and have the emergency info ASAP. Go to <https://www6.hsmv.state.fl.us/dlcheck/findcustomer> or google "Florida Dept of Highway Safety and Motor Vehicles." There is a link on the main page. (I checked this out and found the link hard to follow, but it did lead to the website mentioned above.)



### **Retirement Special Pay Plan**

The Special Pay Plan is a mandatory retirement plan available to salaried (non-OPS) employees for sick and vacation payments at the time of separation. The Special Pay Plan is authorized under Section 401 (a) of the Internal Revenue Code and is being implemented to provide the maximum tax advantages for **vacation and sick leave payouts** to the University and its employees. **BENCOR, Inc.** is the plan administrator for the University of Florida. Wachovia Bank is the trustee and handles all deposits into and distributions of the plan for the University and BENCOR.

#### *Effective Date of the Plan*

The plan will be implemented on **November 29, 2006**. Any employees receiving a **leave cash out of \$2,000 or greater** and with a termination date after that date will participate in this program.

The payments of annual and sick leave to employees separating from the University will be invested in a 401(a) plan – either fixed or mutual fund investment option. As a result of implementing this plan, the employee and the University will save the 6.2% of social security tax and the 1.45% of Medicare Tax. The 7.65% that the employee saves will also be invested in the 401(a) plan. The **plan is mandatory for employees that receive a leave payout of \$2,000 or greater.**

Once a contribution has been made to the plan, the employee will receive an Enrollment/Designation of Beneficiary form from Bencor, the plan Administrator. These forms are also available on the web site and will allow the employee to choose between a Guaranteed Pooled Fund (an interest bearing account) and a variable investment option. If an employee does not direct the investments of his/her funds, they will automatically be placed into the Guaranteed Pool fund which has a fixed rate of 3.75 % through December 31, 2006. As a participant in the plan, you will also be asked to identify a beneficiary.

#### **Who is eligible?**

Faculty, TEAMS, and USPS employees participating in a university retirement plan will be included in the Special Pay Plan, with payments of \$2,000 or more from sick or vacation leave. Employees entering DROP after implementation will also participate.

#### **Who is not eligible?**

Employees excluded from the plan will include students, graduate assistants, fellows, phased retirees, rehired retirees, and all employees appointed in an OPS capacity.

#### **Advantages of the plan**

- This plan provides the maximum tax advantages on sick and annual leave payments for both the employee and the University.
- Participating employees do not pay Social Security taxes for the funds invested in this plan and Social Security taxes are never due on these funds.
- Contributions to this plan are pre-tax. Therefore, the total amount of taxes paid will be reduced. **No taxes are paid on the contributions until they are withdrawn.**
- The account balance is portable, and there are no administrative fees.

#### **Winter Squash Braised in Cider...**

3 lbs. butternut squash  
3 TBL butter  
3 TBL finely chopped rosemary  
3 C apple or pear cider  
1 tsp. balsamic or apple cider  
vinegar to taste

Peel squash, halve, & remove seeds. dice into 1/2 in. chunks. Melt butter in 12" skillet until foamy. Add rosemary, & cook over med. heat about 2 min. Add squash, cider, and 1 tsp salt. If squash is not covered by cider, add water to cover. Simmer; cook till squash is tender and cider is a glaze, stirring frequently (30-40 min.). Sprinkle with vinegar; season w/salt & pepper.

